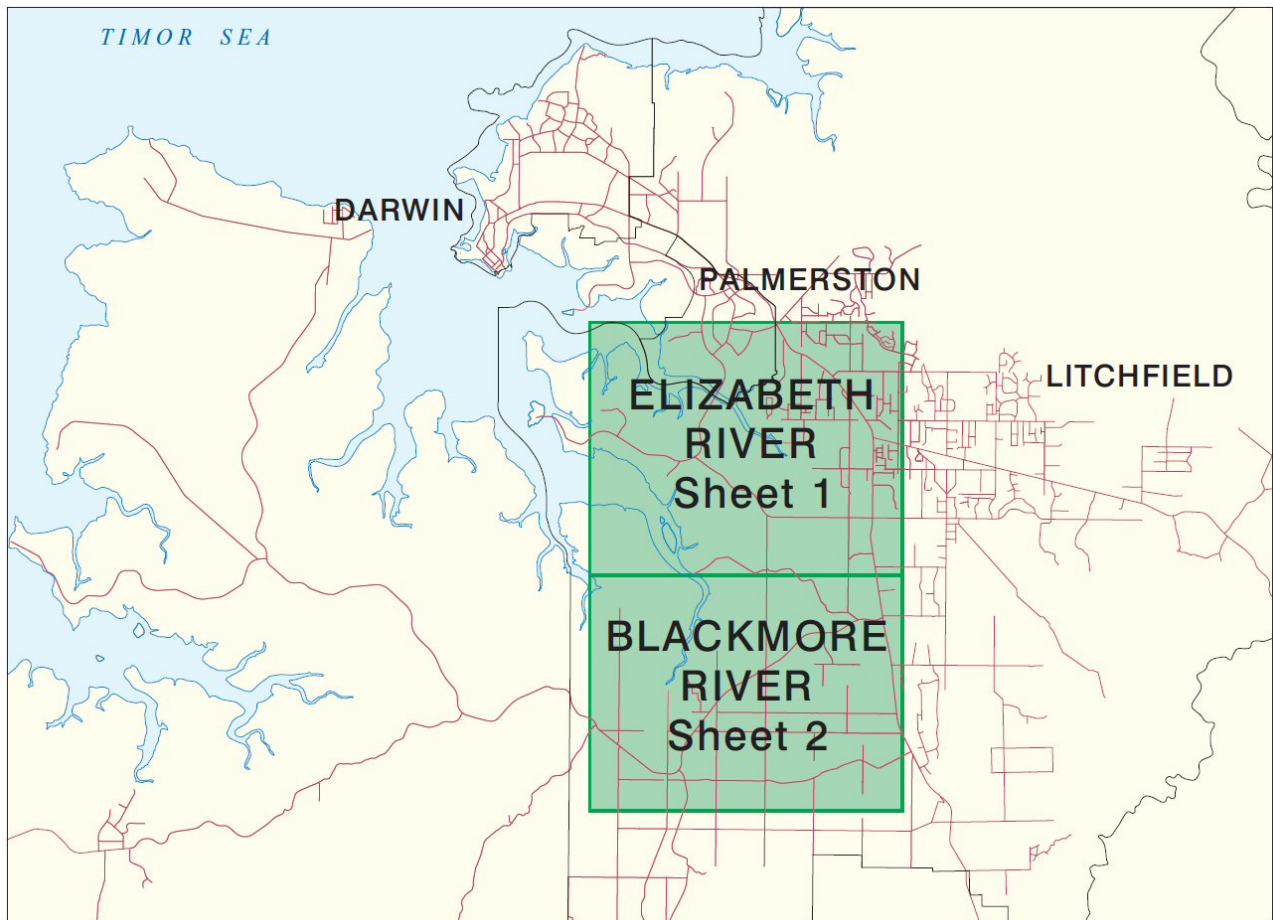


Elizabeth and Blackmore Rivers flood information sheet



Technical report available from [Northern Territory Library](#)

- Elizabeth and Blackmore River Catchments flood study

Elizabeth and Blackmore River Catchments flood study [metadata](#)

Sheets	Computed 1% AEP (1 in 100 Year) flood extent and peak flood surface contours for 2100	File size (MB)
1	Elizabeth and Blackmore River Catchments	0.9
2	Elizabeth and Blackmore River Catchments	1.7

For further information, contact:

Department of Environment and Natural Resources

Director, Water Assessment, Water Resources Division

Level 4, Goyder Centre, 25 Chung Wah Terrace, Palmerston

Phone: (08) 8999 3615

Email: waterresources@nt.gov.au



Creative Commons Attribution 4.0 International Public License (CC BY 4.0) at <https://creativecommons.org/licenses/by/4.0/legalcode>.

