
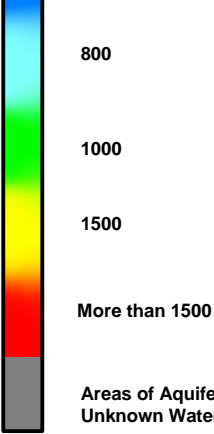






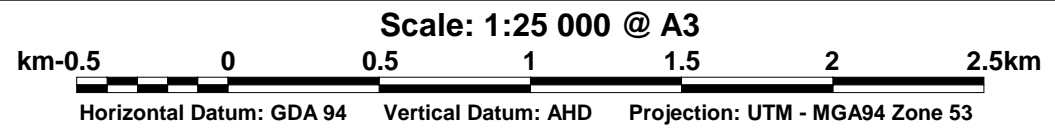
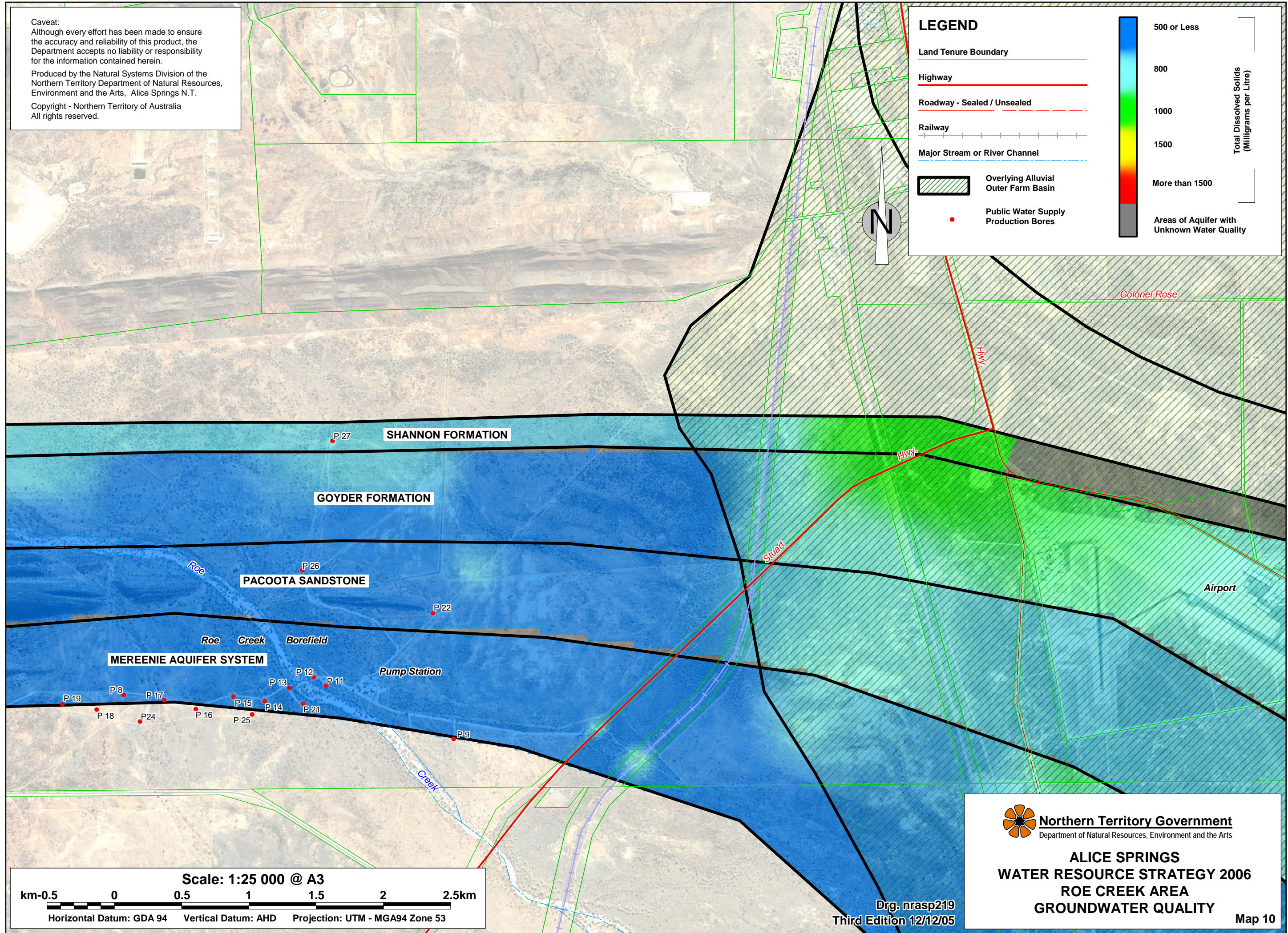


Caveat:
 Although every effort has been made to ensure the accuracy and reliability of this product, the Department accepts no liability or responsibility for the information contained herein.
 Produced by the Natural Systems Division of the Northern Territory Department of Natural Resources, Environment and the Arts, Alice Springs N.T.
 Copyright - Northern Territory of Australia
 All rights reserved.

LEGEND

	Land Tenure Boundary		Total Dissolved Solids (Milligrams per Litre)
	Highway		
	Roadway - Sealed / Unsealed		
	Railway		
	Major Stream or River Channel		
	Overlying Alluvial Outer Farm Basin		
	Public Water Supply Production Bores		



 **Northern Territory Government**
 Department of Natural Resources, Environment and the Arts

**ALICE SPRINGS
 WATER RESOURCE STRATEGY 2006
 ROE CREEK AREA
 GROUNDWATER QUALITY**

Drg. nrasp219
 Third Edition 12/12/05