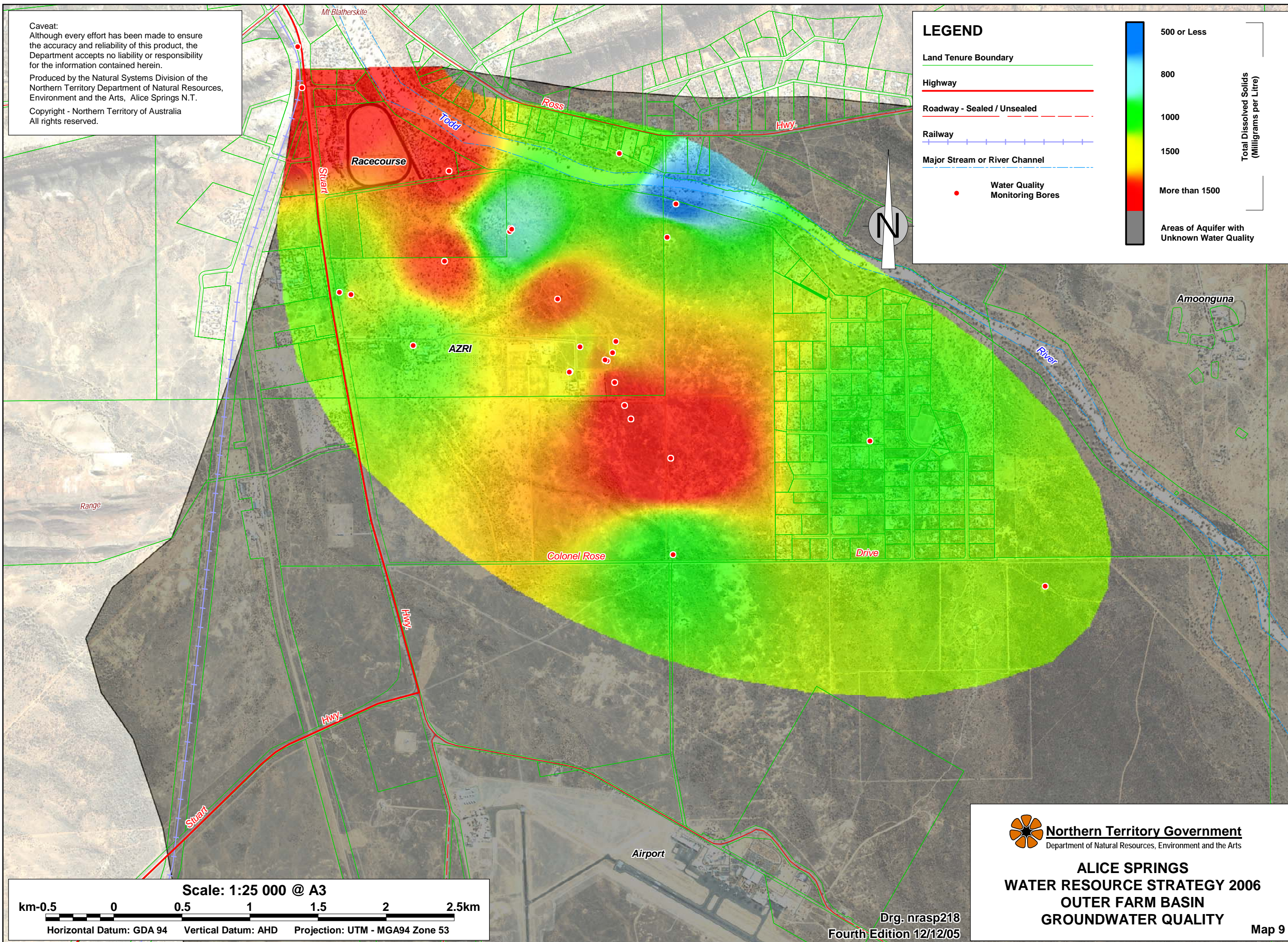


Caveat:
 Although every effort has been made to ensure the accuracy and reliability of this product, the Department accepts no liability or responsibility for the information contained herein.
 Produced by the Natural Systems Division of the Northern Territory Department of Natural Resources, Environment and the Arts, Alice Springs N.T.
 Copyright - Northern Territory of Australia
 All rights reserved.



LEGEND

- Land Tenure Boundary
- Highway
- Roadway - Sealed / Unsealed
- Railway
- Major Stream or River Channel
- Water Quality Monitoring Bores

Total Dissolved Solids (Milligrams per Litre)


- 500 or Less
- 800
- 1000
- 1500
- More than 1500
- Areas of Aquifer with Unknown Water Quality

Scale: 1:25 000 @ A3

km-0.5 0 0.5 1 1.5 2 2.5km

Horizontal Datum: GDA 94 Vertical Datum: AHD Projection: UTM - MGA94 Zone 53

Drg. nrasp218
 Fourth Edition 12/12/05

 **Northern Territory Government**
 Department of Natural Resources, Environment and the Arts

**ALICE SPRINGS
 WATER RESOURCE STRATEGY 2006
 OUTER FARM BASIN
 GROUNDWATER QUALITY**

Map 9