

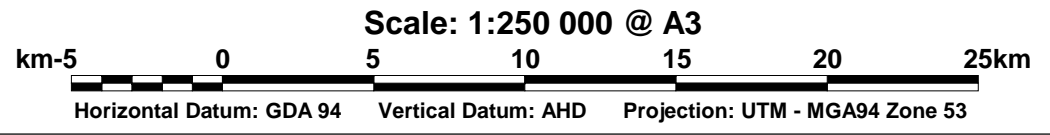
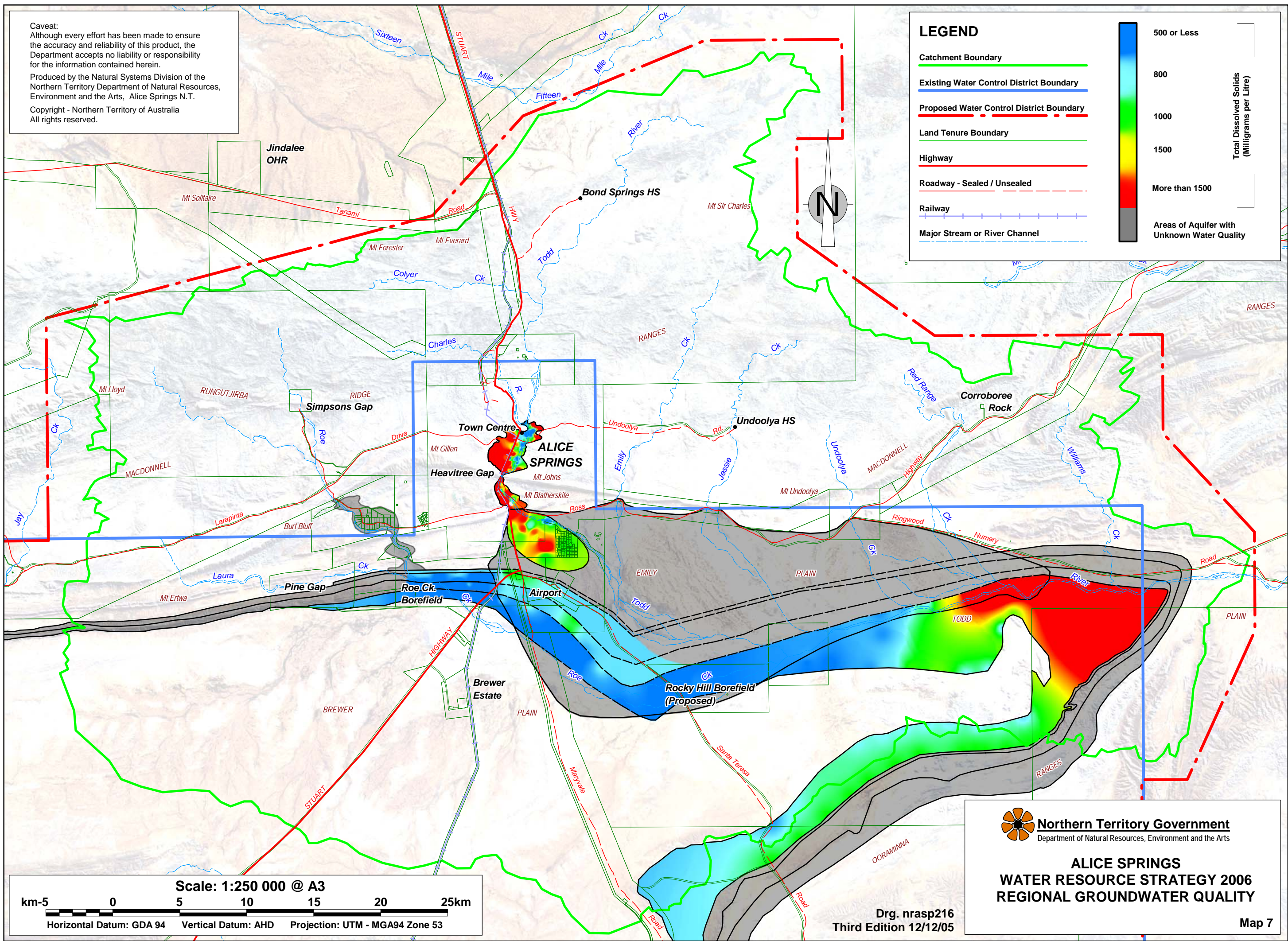
Caveat:
Although every effort has been made to ensure the accuracy and reliability of this product, the Department accepts no liability or responsibility for the information contained herein.
Produced by the Natural Systems Division of the Northern Territory Department of Natural Resources, Environment and the Arts, Alice Springs N.T.
Copyright - Northern Territory of Australia
All rights reserved.

LEGEND

- Catchment Boundary
- Existing Water Control District Boundary
- Proposed Water Control District Boundary
- Land Tenure Boundary
- Highway
- Roadway - Sealed / Unsealed
- Railway
- Major Stream or River Channel

Total Dissolved Solids (Milligrams per Litre)

- 500 or Less
- 800
- 1000
- 1500
- More than 1500
- Areas of Aquifer with Unknown Water Quality



 **Northern Territory Government**
Department of Natural Resources, Environment and the Arts

**ALICE SPRINGS
WATER RESOURCE STRATEGY 2006
REGIONAL GROUNDWATER QUALITY**

Drg. nrasp216
Third Edition 12/12/05