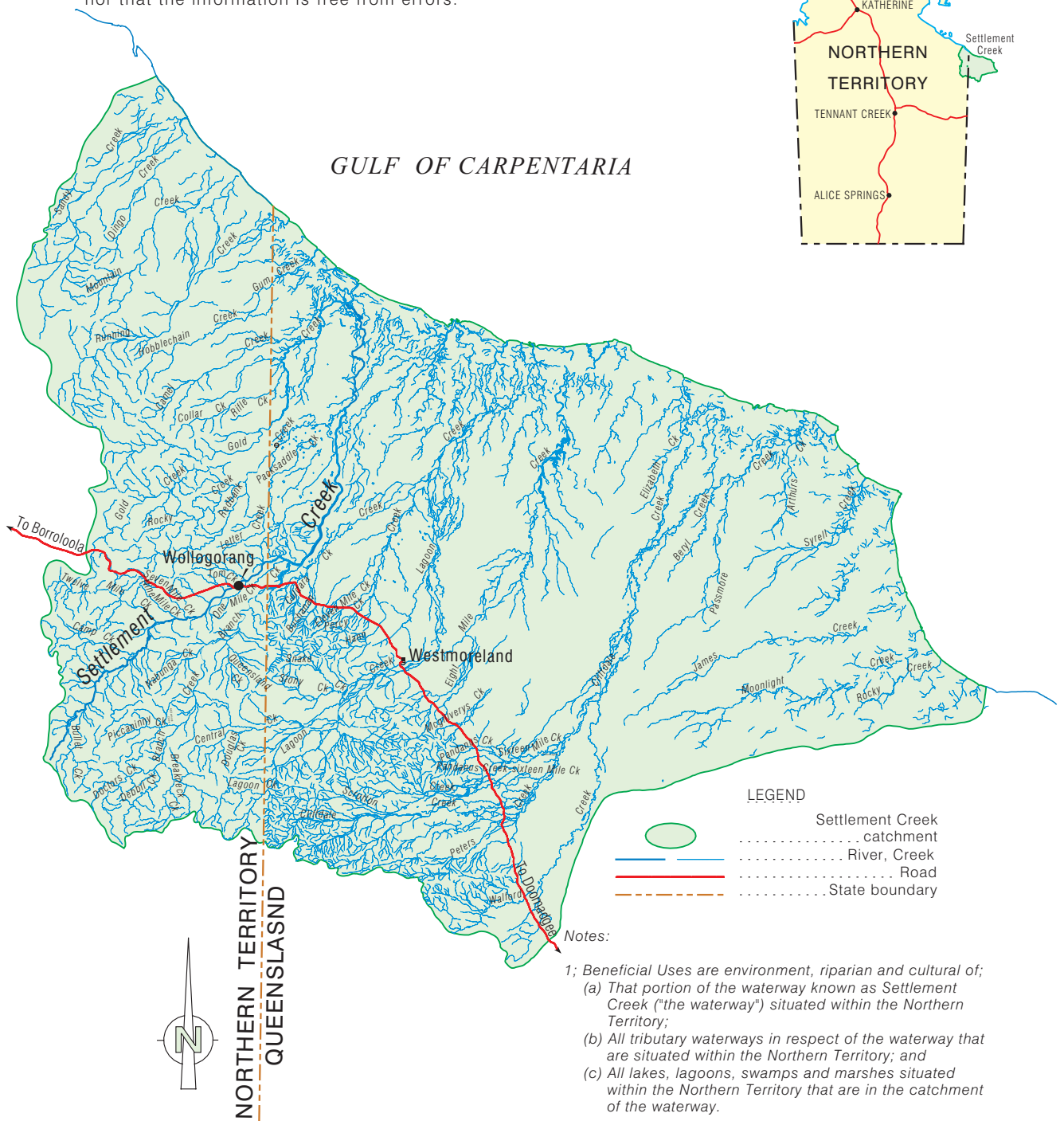
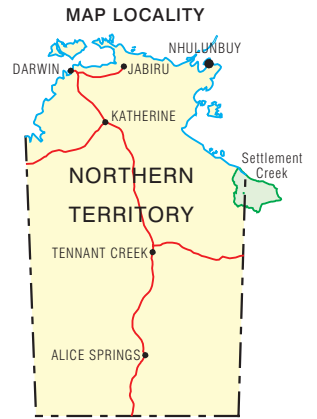


The Northern Territory of Australia accepts no liability for the accuracy of the information provided. Furthermore the Northern Territory of Australia does not warrant that this product contains the latest information available nor that the information is free from errors.



LEGEND

	Settlement Creek catchment
	River, Creek
	Road
	State boundary

- Notes:
- Beneficial Uses are environment, riparian and cultural of;
 - That portion of the waterway known as Settlement Creek ("the waterway") situated within the Northern Territory;
 - All tributary waterways in respect of the waterway that are situated within the Northern Territory; and
 - All lakes, lagoons, swamps and marshes situated within the Northern Territory that are in the catchment of the waterway.
 - For declaration and description see Northern Territory Government Gazette No.S3, 28 February 2003.
 - Settlement Creek catchment boundary derived from Australia's River Basins 1997 as defined by the Australian Water Resources Management Committee (WRMC). Courtesy of Geoscience Australia, Canberra, Australian Capital Territory, Australia.
 - Prepared by Conservation and Natural Resources Division, May 2003.



Transverse Mercator Projection
 Map Grid of Australia (MGA) Zone 53
 Horizontal Datum: GDA 94
 Design File: Settlement-Ck_BU_53m.dgn



© Northern Territory of Australia

DECLARATION OF BENEFICIAL USES AND QUALITY STANDARDS OF WATER

SETTLEMENT CREEK TRIBUTARIES